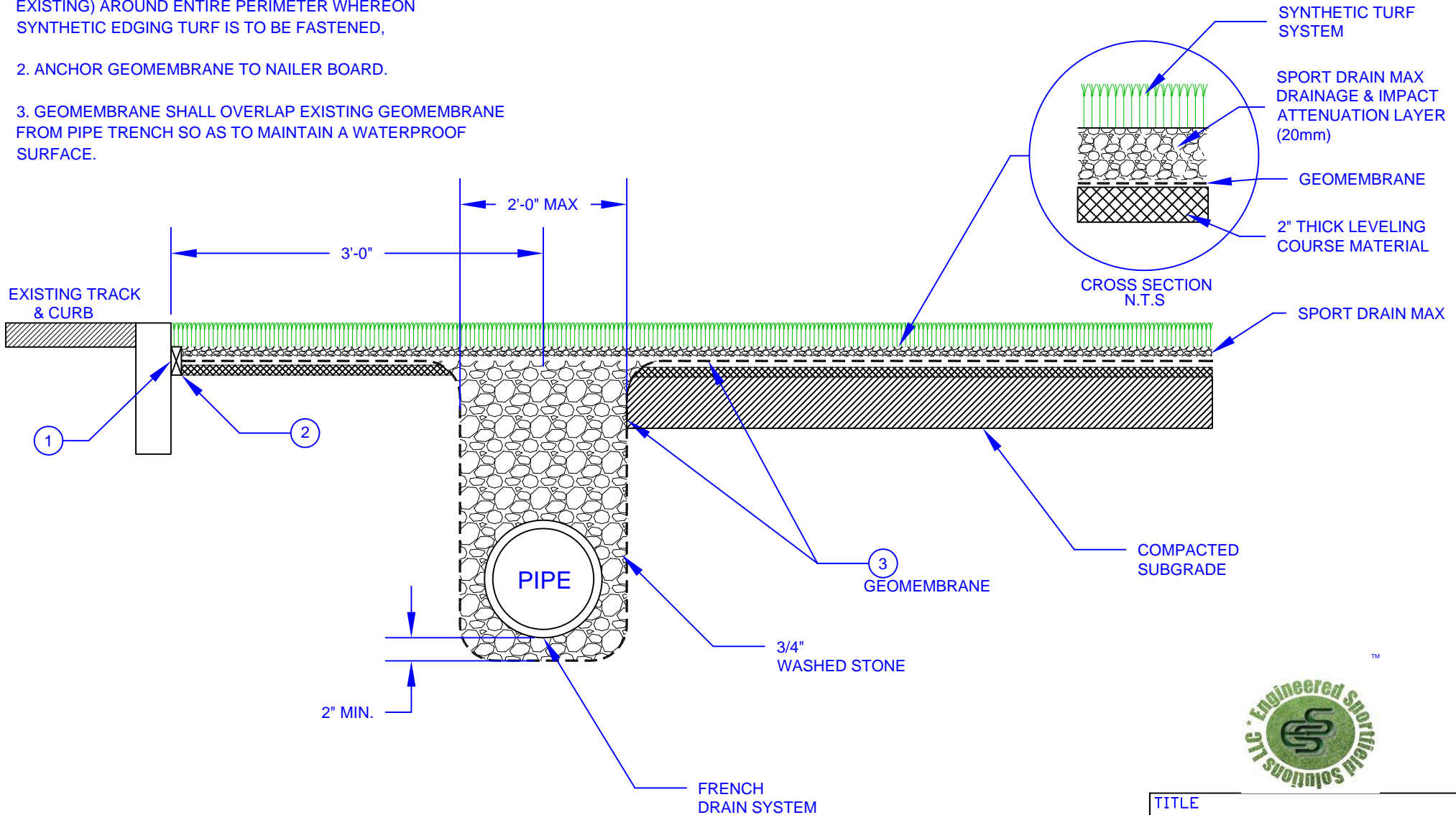


NOTES INDICATED BY NUMBER

1. NAILER BOARD 2 X 4 PRESSURE TREATED LUMBER ANCHORED TO ALL CONCRETE EDGES (NEW AND EXISTING) AROUND ENTIRE PERIMETER WHEREON SYNTHETIC EDGING TURF IS TO BE FASTENED,

2. ANCHOR GEOMEMBRANE TO NAILER BOARD.

3. GEOMEMBRANE SHALL OVERLAP EXISTING GEOMEMBRANE FROM PIPE TRENCH SO AS TO MAINTAIN A WATERPROOF SURFACE.



**TYPICAL FIELD SECTION
N.T.S.**



TITLE			
TYPICAL FIELD DETAIL			
DRAWN	CHK'D	APP'D	RELEASE
GRS			—
DATE	DATE	DATE	
11/12/08			
		SIZE	SHEET
		A	1 OF 1

All trademarks, service marks and logos displayed are registered or unregistered trademarks of Engineered Sportfield Solutions. These trademarks may not be used without written consent. Any unauthorized use of any trademarks, service marks, or logos may be a violation trademark laws.