

PRODUCT SHEET

ALL-IN-ONE₅₀

The shock pad is comprised of recycled cross-linked polyethylene foam bonded with non-woven geotextile on one side. This product provides impact attenuation for playground applications. The material conforms to the values and test methods listed below:

PROPERTIES	TEST METHOD	US VALUE
MATERIAL CHARACTERISTICS		
Dimensions	Panels/Rolls	48"x 48" or 48" x 96" / 48" x 210'
Composition	95% Recycled, non-contaminated, post industrial, cross-link, closed cell polyethylene foam on polyester geotextile.	
Weight		0.9 LBS SF
Thickness	ASTM 5199	50 mm (+/- 2 mm)
Compressive Strength	ASTM 1621	25,000 psf
Tensile Strength	ASTM D 4595	MD: 40 lbs/inch / TD 39 lbs/inch
HIC	ASTM F 355 (C)	144/813, 9' maximum
HYDRAULIC BEHAVIOR		
Transmissivity	ASTM 4716	50 PSF: 1% Slope — 9 gal/hr/ft
Permittivity	ASTM D 4491	3.235 sec-1
Permeability	ASTM D 2434	>34 gal/min/SF

Applications:

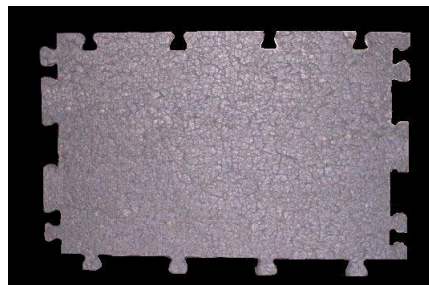
- Recreation
- Landscape
- Playground



WWW.3RFOAM.COM

Note 1: HIC Values are based on a synthetic turf system. For more specific values for your playground system, please contact us directly.

All-In-One is a patent-pending technology



March 2010

3R FOAM

Exclusively Distributed by:

Recycled Foam Technologies, LLC

4223 Rock Run Road, Havre de Grace, MD 21078

Phone: 410-878-6341 Fax: 410-734-4129

ALL-IN-ONE₅₀ is manufactured for Recycled Foam Technologies, LLC. The information contained herein has been accurately compiled by 3R FOAM, LLC, and to the best of our knowledge accurately represents 3R FOAM product. Final determination of the suitability of any information or material for the use contemplated and its manner is the sole responsibility of the users.